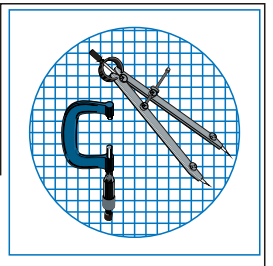




Purchase at the lowest prices:
www.PVCFittingsOnline.com

1-800-361-1452

1-800-561-8579



TECHNICAL INFORMATION



#150

BLACK & GALVANIZED MALLEABLE IRON PIPE FITTINGS

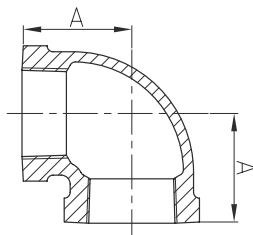




Materials: ASTM A197 / A197M
 Dimensions: Fittings ASME B16.3, B16.14
 Unions B16.39
 Threads: ASME B1.20.1, ISO 7-1

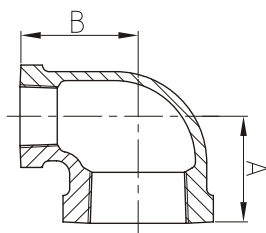
Certifications: cULus, FM, UPC, ISO9001, CRN

90° Elbows



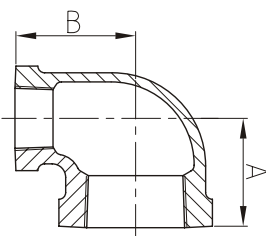
Size	Inch	1/8	1/4	3/8	1/2	3/4	1	1 1/4	1 1/2
	mm	6	8	10	15	20	25	32	40
Dim. (mm)	A	17.5	20.6	24.1	28.5	33.3	38.1	44.5	49.3
Size	Inch	2	2 1/2	3	4	5	6	8	
	mm	50	65	80	100	125	150	200	
Dim. (mm)	A	57.2	68.6	78.2	96.3	114.3	130.3	162	

90° Reducing Elbows



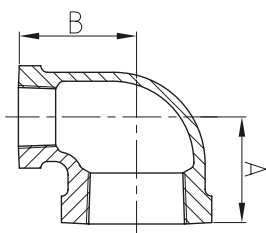
Size	Inch	4X1 1/4	4X1 1/2	4X2	4X2 1/2	4X3	3/8X1/8
	mm	100X32	100X40	100X50	100X65	100X80	10X6
Dim. (mm)	A	60	62	69	78	83.8	20.5
	B	85	85	87	90	91.4	21.6
Size	Inch	3/8X1/4	6X4	1/2X1/4	1/2X3/8	3/4X1/4	3/4X3/8
	mm	10X8	150X100	15X8	15X10	20X8	20X10
Dim. (mm)	A	22.4	102	24.6	26.4	26.7	28.5
	B	22.9	125	24.9	26.2	27.4	28.7

90° Reducing Elbows



Size	Inch	3/4X1/2	1X1/4	1X3/8	1X1/2	1X3/4
	mm	20X15	25X8	25X10	25X15	25X20
Dim. (mm)	A	30.5	27	30	32	34.8
	B	31	31	32.3	35.5	36.8
Size	Inch	1 1/4X3/8	1 1/4X1/2	1 1/4X3/4	1 1/4X1	1 1/2X1/2
	mm	32X10	32X15	32X20	32X25	40X15
Dim. (mm)	A	32	34	36.8	40.1	35
	B	36.5	38.9	41.2	42.4	41.5

90° Reducing Elbows



Size	Inch	1 1/2X3/4	1 1/2X1	1 1/2X1 1/4	2X1/2	2X3/4
	mm	40X20	40X25	40X32	50X15	50X20
Dim. (mm)	A	38.6	41.9	46.2	37.5	40.6
	B	44.5	45.7	47.8	47.5	50.0
Size	Inch	2X1	2X1 1/4	2X1 1/2	2 1/2X3/4	2 1/2X1
	mm	50X25	50X32	50X40	65X20	65X25
Dim. (mm)	A	43.9	48.3	51.3	42	46
	B	51.3	53.3	54.9	57	58.7



Materials: ASTM A197 / A197M
 Dimensions: Fittings ASME B16.3, B16.14
 Unions B16.39
 Threads: ASME B1.20.1, ISO 7-1

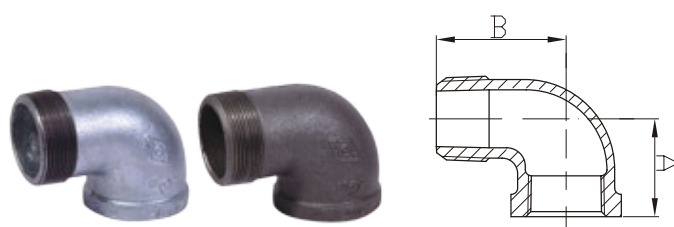
Certifications: cULus, FM, UPC, ISO9001, CRN

90° Reducing Elbows



Size	Inch	21/2X11/4	21/2X11/2	21/2X2	3X3/4	3X1
	mm	65X32	65X40	65X50	80X20	80X25
Dim. (mm)	A	50.5	54.9	60.7	45	50
	B	60	63.8	66.0	65	67.5
Size	Inch	3X11/4	3X11/2	3X2	3X21/2	1/4X1/8
	mm	80X32	80X40	80X50	80X65	8X6
Dim. (mm)	A	55	58	64	71.9	18.8
	B	70	72	73.4	75.9	19.3

90° Street Elbows



Size	Inch	1/8	1/4	3/8	1/2	3/4	1	1 1/4
	mm	6	8	10	15	20	25	32
Dim. (mm)	A	17.5	20.6	24.1	28.5	33.3	38.1	44.5
	B	25.4	30.2	36.6	41.2	48.0	54.4	62.2
Size	Inch	1 1/2	2	2 1/2	3	4	6	
	mm	40	50	65	80	100	150	
Dim. (mm)	A	49.3	57.2	68.6	78.2	96.3	130.3	
	B	68.3	82.8	98.0	114.6	144.5	204.0	

45° Elbows



Size	Inch	1/8	1/4	3/8	1/2	3/4	1	1 1/4	1 1/2
	mm	6	8	10	15	20	25	32	40
Dim. (mm)	A	16	18.5	20.3	22.4	24.9	28.5	32.8	36.3
	B	21	23.9	26.2	29.2	32.8	37.3	43.4	47.8
Size	Inch	2	2 1/2	3	4	5	6	8	
	mm	50	65	80	100	125	150	200	
Dim. (mm)	A	42.7	49.5	55.1	66.3	77.5	87.9	106.7	
	B	68.3	82.8	98.0	114.6	144.5	204.0		

45° Street Elbows



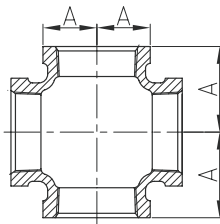
Size	Inch	1/8	1/4	3/8	1/2	3/4	1
	mm	6	8	10	15	20	25
Dim. (mm)	A	16	18.5	20.3	22.4	24.9	28.5
	B	21	23.9	26.2	29.2	32.8	37.3
Size	Inch	1 1/4	1 1/2	2	2 1/2	3	4
	mm	32	40	50	65	80	100
Dim. (mm)	A	32.8	36.3	42.7	49.5	55.1	66.3
	B	43.4	47.8	56.4	65.3	76.2	94.0



Materials: ASTM A197 / A197M
 Dimensions: Fittings ASME B16.3, B16.14
 Unions B16.39
 Threads: ASME B1.20.1, ISO 7-1

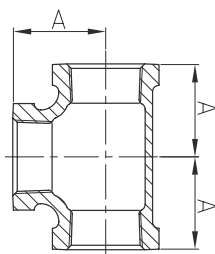
Certifications: cULus, FM, UPC, ISO9001, CRN

Crosses



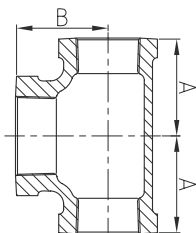
Size	Inch	1/8	1/4	3/8	1/2	3/4	1
	mm	6	8	10	15	20	25
Dim. (mm)	A	17.5	20.6	24.1	28.5	33.3	38.1
Size	Inch	1 1/4	1 1/2	2	2 1/2	3	4
	mm	32	40	50	65	80	100
Dim. (mm)	A	44.5	49.3	57.2	68.6	78.2	96.3

Tees



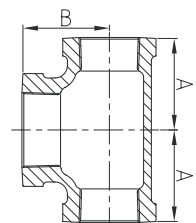
Size	Inch	1/8	1/4	3/8	1/2	3/4	1	1 1/4	1 1/2
	mm	6	8	10	15	20	25	32	40
Dim. (mm)	A	17.5	20.6	24.1	28.5	33.3	38.1	44.5	49.3
Size	Inch	2	2 1/2	3	4	5	6	8	
	mm	50	65	80	100	125	150	200	
Dim. (mm)	A	57.2	68.6	78.2	96.3	114.3	130.3	162	

Bull Head Reducing Tees



Size	Inch	1/2X1/2X3/4	1/2X1/2X1	3/4X3/4X1	3/4X3/4X1 1/4
	mm	15X15X20	15X15X25	20X20X25	20X20X32
Dim. (mm)	A	31	34.6	36.8	41.2
	B	30.5	32.0	34.8	36.8
Size	Inch	1X1X1 1/4	1X1X1 1/2	1X1X2	1X1X2 1/2
	mm	25X25X32	25X25X40	25X25X50	25X25X65
Dim. (mm)	A	42.4	45.7	51.3	60
	B	40.1	41.9	48.9	48

Bull Head Reducing Tees



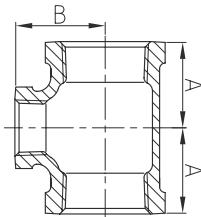
Size	Inch	1 1/4X1 1/4X1 1/2	1 1/4X1 1/4X2	1 1/2X1 1/2X2	1 1/2X1 1/2X2 1/2
	mm	32X32X40	32X32X50	40X40X50	40X40X65
Dim. (mm)	A	47.8	53.3	54.9	62
	B	46.2	48.3	51.3	55
Size	Inch	2X2X2 1/2	2 1/2X2 1/2X3	2 1/2X2 1/2X4	
	mm	50X50X65	65X65X80	65X65X100	
Dim. (mm)	A	66	76	90	
	B	60.7	71.9	78	



Materials: ASTM A197 / A197M
 Dimensions: Fittings ASME B16.3, B16.14
 Unions B16.39
 Threads: ASME B1.20.1, ISO 7-1

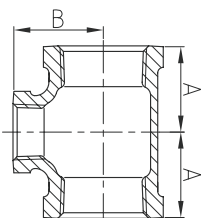
Certifications: cULus, FM, UPC, ISO9001, CRN

Reducing Tees



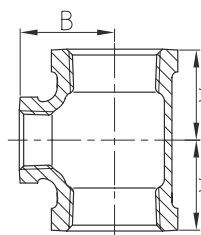
Size	Inch	4X1/2	4X3/4	4X1	4X11/4	4X11/2	4X2
	mm	100X15	100X20	100X25	100X32	100X40	100X50
Dim. (mm)	A	50	53	56	60	63.8	69.6
	B	79	79	82	84	84.3	86.6
Size	Inch	4X21/2	4X3	3/8X1/4	6X4	6X2	6X3
	mm	100X65	100X80	10X8	150X100	150X50	150X80
Dim. (mm)	A	77.5	83.8	22.4	104.9	78.2	92.5
	B	89.2	91.4	22.9	125.5	115.8	120.7

Reducing Tees



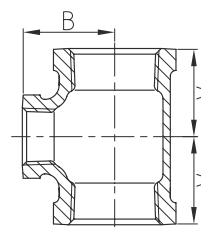
Size	Inch	1/2X1/8	1/2X1/4	1/2X3/8	3/4X1/4	3/4X3/8
	mm	15X6	15X8	15X10	20X8	20X10
Dim. (mm)	A	22	24.6	26.4	26.7	28.5
	B	23	24.9	26.2	27.4	28.7
Size	Inch	3/4X1/2	1X1/4	1X3/8	1X1/2	1X3/4
	mm	20X15	25X8	25X10	25X15	25X20
Dim. (mm)	A	30.5	28.2	30	32	34.8
	B	31	31	32.3	35.5	36.8

Reducing Tees



Size	Inch	11/4X3/8	11/4X1/2	11/4X3/4	11/4X1	11/2X3/8
	mm	32X10	32X15	32X20	32X25	40X10
Dim. (mm)	A	32	34	36.8	40.1	34
	B	36.6	38.9	41.2	42.4	39
Size	Inch	11/2X1/2	11/2X3/4	11/2X1	11/2X11/4	2X3/8
	mm	40X15	40X20	40X25	40X32	50X10
Dim. (mm)	A	35.8	38.6	41.9	46.2	36
	B	42.2	44.5	45.7	47.8	46

Reducing Tees



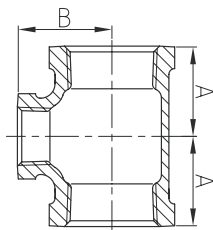
Size	Inch	2X1/2	2X3/4	2X1	2X11/4	2X11/2
	mm	50X15	50X20	50X25	50X32	50X40
Dim. (mm)	A	37.9	40.6	43.9	48.3	51.3
	B	47.8	50	51.3	53.3	54.9
Size	Inch	21/2X1/2	21/2X3/4	21/2X1	21/2X11/4	21/2X11/2
	mm	65X15	65X20	65X25	65X32	65X40
Dim. (mm)	A	41	44.2	47.5	51.8	54.9
	B	57	58.9	60.2	62.2	63.8



Materials: ASTM A197 / A197M
 Dimensions: Fittings ASME B16.3, B16.14
 Unions B16.39
 Threads: ASME B1.20.1, ISO 7-1

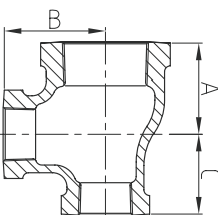
Certifications: cULus, FM, UPC, ISO9001, CRN

Reducing Tees



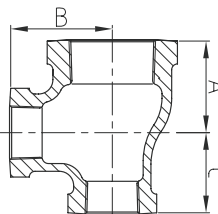
Size	Inch	21/2X2	3X1/2	3X3/4	3X1	3X11/4
	mm	65X50	80X15	80X20	80X25	80X32
Dim. (mm)	A	60.7	42	47.5	50.8	55.1
	B	66.0	64	66.3	67.6	69.6
Size	Inch	3X11/2	3X2	3X21/2	1/4X1/8	
	mm	80X40	80X50	80X65	8X6	
Dim. (mm)	A	58.2	64.0	71.9	18.8	
	B	71.1	73.4	76	19.3	

Reducing Tees



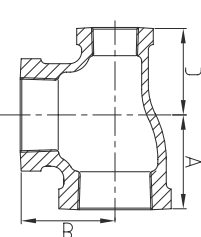
Size	Inch	3/4X1/2X1/2	1X1/2X1/2	1X3/4X3/4	11/4X1/2X1/2
	mm	20X15X15	25X15X15	25X20X20	32X15X15
Dim. (mm)	A	30.5	32	34.8	34
	B	31	35.5	36.8	38
	C	28.5	28.5	33.3	27
Size	Inch	11/4X3/4X3/4	11/4X1X1	11/2X3/4X3/4	11/2X1X1
	mm	32X20X20	32X25X25	40X20X20	40X25X25
Dim. (mm)	A	36.8	40.1	38	41.9
	B	41.2	42.4	43	45.7
	C	33.3	38.1	32	38.1

Reducing Tees



Size	Inch	11/2X11/4X11/4	2X1X1	2X11/4X11/4	2X11/2X11/2
	mm	40X32X32	50X25X25	50X32X32	50X40X40
Dim. (mm)	A	46.2	44	48.3	51.3
	B	47.8	51	53.3	54.9
	C	44.5	38	44.5	49.3
Size	Inch	21/2X2X2	3X2X2		
	mm	65X50X50	80X50X50		
Dim. (mm)	A	60.7	64		
	B	66	73.4		
	C	57.2	57.2		

Reducing Tees



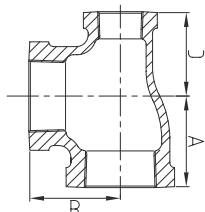
Size	Inch	3/4X1/2X3/4	1X1/4X1	1X1/2X1	1X3/4X1	11/4X1/2X11/4
	mm	20X15X20	25X8X25	25X15X25	25X20X25	32X15X32
Dim. (mm)	A	33.3	37	38.1	38.1	44.5
	B	33.3	37	38.1	38.1	44.5
	C	31	30	35.5	36.8	38.9
Size	Inch	11/4X3/4X11/4	11/4X1X11/4	11/2X1/2X11/2	11/2X3/4X11/2	11/2X1X11/2
	mm	32X20X32	32X25X32	40X15X40	40X20X40	40X25X40
Dim. (mm)	A	44.5	44.5	49.3	49.3	49.3
	B	44.5	44.5	49.3	49.3	49.3
	C	41.2	42.4	42.2	44.5	45.7



Materials: ASTM A197 / A197M
 Dimensions: Fittings ASME B16.3, B16.14
 Unions B16.39
 Threads: ASME B1.20.1, ISO 7-1

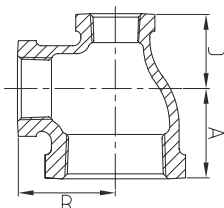
Certifications: cULus, FM, UPC, ISO9001, CRN

Reducing Tees



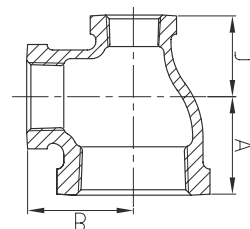
Size	Inch	11/2X11/4X11/2	2X1/2X2	2X3/4X2	2X1X2
	mm	40X32X40	50X15X50	50X20X50	50X25X50
Dim. (mm)	A	49.3	57.2	57.2	57.2
	B	49.3	57.2	57.2	57.2
	C	47.8	47.8	50	51.3
Size	Inch	2X11/4X2	2X11/2X2	21/2X11/2X21/2	21/2X2X21/2
	mm	50X32X50	50X40X50	65X40X65	65X50X65
Dim. (mm)	A	57.2	57.2	68.6	68.6
	B	57.2	57.2	68.6	68.6
	C	53.3	54.8	63.8	66

Reducing Tees



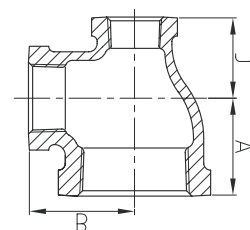
Size	Inch	4X3X2	3/4X1/2X1	1X1/2X3/4	11/4X1/2X3/4	11/4X1/2X11/4
	mm	100X80X50	20X15X25	25X15X20	32X15X20	32X15X25
Dim. (mm)	A	67	38	34.8	35	40.1
	B	83.5	34	36.8	38	42.4
	C	60	33	31	29	34.5
Size	Inch	11/4X3/4X1/2	11/4X3/4X1	11/4X1X1/2	11/4X1X3/4	11/2X1/2X1
	mm	32X20X15	32X20X25	32X25X15	32X25X20	40X15X25
Dim. (mm)	A	40	40.1	34.0	36.8	44
	B	42.5	42.4	38.9	41.2	46
	C	37	36.8	32	34.8	34

Reducing Tees



Size	Inch	11/2X3/4X1	11/2X3/4X11/4	11/2X1X1/2	11/2X3/4X11/4	11/2X11/4X1/2
	mm	40X20X25	40X20X32	40X25X15	40X25X32	40X32X15
Dim. (mm)	A	44	46	37	45	35.8
	B	46	48	41	47	42.2
	C	35	41	32	41.5	34.0
Size	Inch	11/2X11/4X3/4	11/2X11/4X1	11/2X11/4X2	2X1X11/2	2X11/4X1
	mm	40X32X20	40X32X25	40X32X50	50X25X40	50X32X25
Dim. (mm)	A	38.6	41.9	55	51.3	40
	B	44.5	45.7	51.5	54.9	51
	C	36.3	40.1	53.5	45.7	44

Reducing Tees



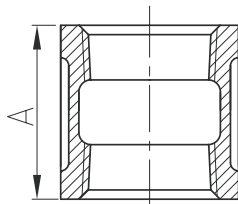
Size	Inch	2X11/4X11/2	2X11/2X1/2	2X11/2X3/4	2X11/2X1	2X11/2X11/4
	mm	50X32X40	50X40X15	50X40X20	50X40X25	50X40X32
Dim. (mm)	A	51.3	38	39.5	43.9	48.3
	B	54.9	48	49	51.3	53.3
	C	47.8	36	37.5	41.9	46.2
Size	Inch	21/2X2X1/2	21/2X2X1	21/2X2X11/4	3X21/2X2	
	mm	65X50X15	65X50X25	65X50X32	80X65X50	
Dim. (mm)	A	57	53	57	64.0	
	B	64	60	64	73.4	
	C	52	53	52	60.7	



Materials: ASTM A197 / A197M
 Dimensions: Fittings ASME B16.3, B16.14
 Unions B16.39
 Threads: ASME B1.20.1, ISO 7-1

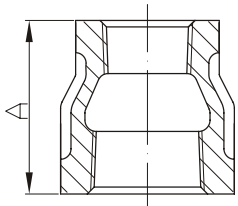
Certifications: cULus, FM, UPC, ISO9001, CRN

Couplings



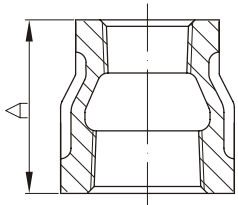
Size	Inch	1/8	1/4	3/8	1/2	3/4	1	1 1/4
	mm	6	8	10	15	20	25	32
Dim. (mm)	A	24.2	26.9	29.5	34.0	38.6	42.4	49
Size	Inch	1 1/2	2	2 1/2	3	4	5	6
	mm	40	50	65	80	100	125	150
Dim. (mm)	A	54.6	64.3	73.2	80.8	93.7	95	105

Reducing Couplings



Size	Inch	4X1	4X1 1/4	4X1 1/2	4X2	4X2 1/2
	mm	100X25	100X32	100X40	100X50	100X65
Dim. (mm)	A	111.3	111.3	111.3	111.3	111.3
Size	Inch	4X3	3/8X1/8	3/8X1/4	5X4	6X4
	mm	100X80	10X6	10X8	125X100	150X100
Dim. (mm)	A	111.3	28.7	28.7	122	105

Reducing Couplings



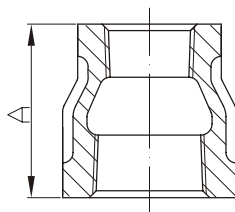
Size	Inch	6X2	6X3	1/2X1/8	1/2X1/4	1/2X3/8	3/4X1/8
	mm	150X50	150X80	15X6	15X8	15X10	20X6
Dim. (mm)	A	105	105	31.8	31.8	31.8	36.6
Size	Inch	3/4X1/4	3/4X3/8	3/4X1/2	1X1/4	1X3/8	1X1/2
	mm	20X8	20X10	20X15	25X8	25X10	25X15
Dim. (mm)	A	36.6	36.6	36.6	42.9	42.9	42.9



Materials: ASTM A197 / A197M
 Dimensions: Fittings ASME B16.3, B16.14
 Unions B16.39
 Threads: ASME B1.20.1, ISO 7-1

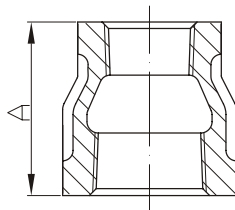
Certifications: cULus, FM, UPC, ISO9001, CRN

Reducing Couplings



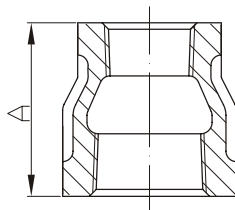
Size	Inch	1X3/4	11/4X1/4	11/4X3/8	11/4X1/2	11/4X3/4	11/4X1
	mm	25X20	32X8	32X10	32X15	32X20	32X25
Dim. (mm)	A	42.9	52.3	52.3	52.3	52.3	52.3
Size	Inch	11/2X1/4	11/2X3/8	11/2X1/2	11/2X3/4	11/2X1	2X1/2
	mm	40X8	40X10	40X15	40X20	40X25	50X15
Dim. (mm)	A	58.7	58.7	58.7	58.7	58.7	71.4

Reducing Couplings



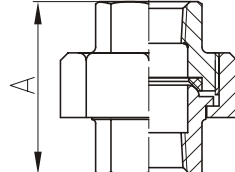
Size	Inch	11/2X11/4	2X3/4	2X1	2X11/4	2X11/2
	mm	40X32	50X20	50X25	50X32	50X40
Dim. (mm)	A	58.7	71.4	71.4	71.4	71.4
Size	Inch	21/2X1/2	21/2X3/4	21/2X1	21/2X11/4	21/2X11/2
	mm	65X15	65X20	65X25	65X32	65X40
Dim. (mm)	A	82.6	82.6	82.6	82.6	82.6

Reducing Couplings



Size	Inch	21/2X2	3X1/2	3X3/4	3X1	3X11/4
	mm	65X50	80X15	80X20	80X25	80X32
Dim. (mm)	A	82.6	93.7	93.7	93.7	93.7
Size	Inch	3X11/2	3X2	3X21/2	1/4X1/8	8X6
	mm	80X40	80X50	80X65	8X6	200X150
Dim. (mm)	A	93.7	93.7	93.7	25.4	131

Brass Seat Unions



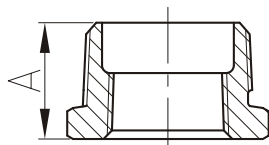
Size	Inch	1/8	1/4	3/8	1/2	3/4	1	11/4
	mm	6	8	10	15	20	25	32
Dim. (mm)	A Min	32	36.5	41	43.5	49.5	52.5	57.5
Size	Inch	11/2	2	21/2	3	4	6	
	mm	40	50	65	80	100	150	
Dim. (mm)	A Min	61	70	82	89	98	145	



Materials: ASTM A197 / A197M
 Dimensions: Fittings ASME B16.3, B16.14
 Unions B16.39
 Threads: ASME B1.20.1, ISO 7-1

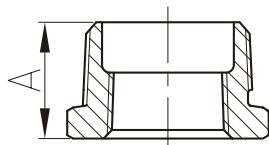
Certifications: cULus, FM, UPC, ISO9001, CRN

Outside Hex. Bushings



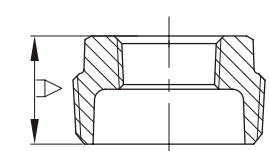
Size	Inch	4X3	3/8X1/8	3/8X1/4	5X4	6X5	1/2X1/8	1/2X1/4
	mm	100X80	10X6	10X8	125X100	150X125	15X6	15X8
Dim. (mm)	A	43.7	16.3	16.3	46	51.6	19	19
Size	Inch	1/2X3/8	3/4X1/8	3/4X1/4	3/4X3/8	3/4X1/2	1X1/2	1X3/4
	mm	15X10	20X6	20X8	20X10	20X15	25X15	25X20
Dim. (mm)	A	19	21.6	21.6	21.6	21.6	25.5	25.5

Outside Hex. Bushings



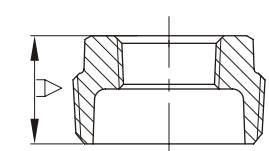
Size	Inch	11/4X3/4	11/4X1	11/2X1	11/2X11/4	2X11/4	2X11/2
	mm	32X20	32X25	40X25	40X32	50X32	50X40
Dim. (mm)	A	27.4	27.4	29	29	31	31
Size	Inch	21/2X2	21/2X2	3X2	3X21/2	1/4X1/8	8X6
	mm	65X40	65X50	80X50	80X65	8X6	200X150
Dim. (mm)	A	38.4	36.6	40.9	38.9	14.8	70

Inside Hex. Bushings



Size	Inch	4X3/4	4X1	4X11/4	4X11/2	4X11/2	4X11/2
	mm	100X20	100X25	100X32	100X40	100X50	100X65
Dim. (mm)	A	46.2	46.2	46.2	46.2	46.2	46.2
Size	Inch	6X21/2	6X21/2	6X21/2	6X21/2	1X1/4	1X1/4
	mm	150X50	150X65	150X80	150X100	25X6	25X8
Dim. (mm)	A	54.7	54.7	54.7	54.7	26.7	26.7

Inside Hex. Bushings



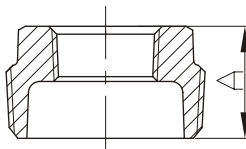
Size	Inch	1X3/8	11/4X3/8	11/4X1/2	11/2X1/4	11/2X3/8
	mm	25X10	32X8	32X10	40X8	40X10
Dim. (mm)	A	26.7	28.9	28.9	30.5	30.5
Size	Inch	11/2X1/2	11/2X3/4	2X1	2X1	2X1
	mm	40X15	40X20	50X8	50X10	50X15
Dim. (mm)	A	30.5	30.5	32.8	32.8	32.8



Materials: ASTM A197 / A197M
 Dimensions: Fittings ASME B16.3, B16.14
 Unions B16.39
 Threads: ASME B1.20.1, ISO 7-1

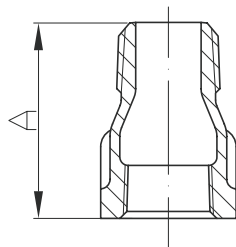
Certifications: cULus, FM, UPC, ISO9001, CRN

Inside Hex. Bushings



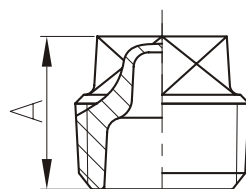
Size	Inch	2X1	2X1	21/2X1/2	21/2X3/4	21/2X1/2	21/2X3/4
	mm	50X20	50X25	65X15	65X20	65X25	65X32
Dim. (mm)	A	32.8	32.8	38.4	38.4	38.4	38.4
Size	Inch	3X2	3X2 1/2	3X2	3X2 1/2	3X2	
	mm	80X15	80X20	80X25	80X32	80X40	
Dim. (mm)	A	40.9	40.9	40.9	40.9	40.9	

MxF Extension Piece



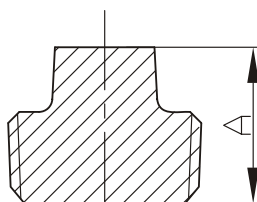
Size	Inch	1/2	3/4
	mm	15	20
Dim. (mm)	A	43	48

Cored Plugs



Size	Inch	1/8	1/4	3/8	1/2	3/4	1	1 1/4
	mm	6	8	10	15	20	25	32
Dim. (mm)	A	15.5	18.3	20.1	23.9	27.2	31.8	34.5
Size	Inch	1 1/2	2	2 1/2	3	4	6	
	mm	40	50	65	80	100	150	
Dim. (mm)	A	36.9	39.7	46	49	64.5	71.5	

Solid Plugs



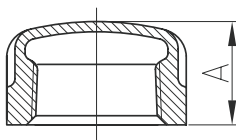
Size	Inch	1/8	1/4	3/8	1/2	3/4	1
	mm	6	8	10	15	20	25
Dim. (mm)	A	15.5	18.3	20.1	23.9	27.2	31.8
Size	Inch	1 1/4	1 1/2	2	2 1/2	3	4
	mm	32	40	50	65	80	100
Dim. (mm)	A	34.5	36.9	39.7	46	49	64.5



Materials: ASTM A197 / A197M
 Dimensions: Fittings ASME B16.3, B16.14
 Unions B16.39
 Threads: ASME B1.20.1, ISO 7-1

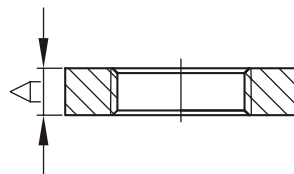
Certifications: cULus, FM, UPC, ISO9001, CRN

Caps



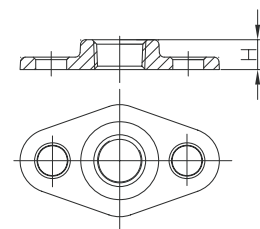
Size	Inch	1/8	1/4	3/8	1/2	3/4	1	1 1/4	1 1/2
	mm	6	8	10	15	20	25	32	40
Dim. (mm)	A Min	13.5	16.0	18.8	22.1	24.6	29.5	32.5	33.8
Size	Inch	2	2 1/2	3	4	5	6	8	
	mm	50	65	80	100	125	150	200	
Dim. (mm)	A	36.8	43.2	45.7	52.8	58.9	64.8	76.2	

Hex. Locknuts



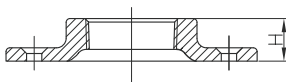
Size	Inch	1/8	1/4	3/8	1/2	3/4	1
	mm	6	8	10	15	20	25
Dim. (mm)	A Min	4.8	6.4	7.1	7.9	8.6	9.7
Size	Inch	1 1/4	1 1/2	2	2 1/2	3	4
	mm	32	40	50	65	80	100
Dim. (mm)	A Min	10.7	11.9	13.5	15	17	20.3

Wastenuts



Size	Inch	1/2	3/4	1	1 1/4	1 1/2	2
	mm	15	20	25	32	40	50
Dim. (mm)	A Min	12	13	13.5	15	16	18
Size	Inch	2 1/2					
	mm	65					
Dim. (mm)	A Min	20					

Floor Flanges



Size	Inch	1/4	3/8	1/2	3/4	1	1 1/4
	mm	8	10	15	20	25	32
Dim. (mm)	A Min	12	14	14	16	17	19
Size	Inch	1 1/2	2	2 1/2	3	4	
	mm	40	50	65	80	100	
Dim. (mm)	A Min	22	25	26.2	27.3	30.5	